

Progressive Multifocal Leukoencephalitis of the Immunocompromised Subject: A Case Report from Zinder National Hospital

Doutchi Mahamadou ^{a,b*}, Souleymane Adoum Fils ^a,
Lamine Mahaman Moustapha ^{b,c},
Adamou Bara Abdoul-Aziz ^a, Bagnou Hamsatou ^b,
Garba Abdoul Aziz ^{a,b} and Adehossi Eric ^d

^a Faculty of Health Sciences, André Salifou University, Zinder, Niger.

^b National Hospital of Zinder, Niger.

^c Faculty of Science and Technology, André Salifou University, Zinder, Niger.

^d Faculty of Health Sciences, Abdou Moumouni University, Niamey, Niger.

Authors' contributions

This work was carried out in collaboration among all authors. Author DM designed the study, performed the statistical analysis, drafted the protocol and the first version of the manuscript. The other authors managed the study analyses and literature search. All authors read and approved the final manuscript.

Article Information

DOI: <https://doi.org/10.9734/ajrid/2024/v15i8368>

Open Peer Review History:

This journal follows the Advanced Open Peer Review policy. Identity of the Reviewers, Editor(s) and additional Reviewers, peer review comments, different versions of the manuscript, comments of the editors, etc are available here: <https://www.sdiarticle5.com/review-history/120342>

Case Report

Received: 27/05/2024

Accepted: 01/08/2024

Published: 06/08/2024

*Corresponding author: E-mail: m.doutchi@yahoo.fr;

ABSTRACT

Progressive multifocal leukoencephalitis (PML) is a rare opportunistic infection of HIV-infected individuals. It is a viral infection caused by the John Cunningham (JC) virus, which occurs during the AIDS stage. An elderly patient immunosuppressed by HIV for more than 5 years presented to the HNZ SMIT with headache, vomiting, visual disturbances, speech disorders and numbness of the limbs, all of which had been evolving in a febrile context for more than seven months. Neurological examination revealed left hemiparesis, frontal syndrome, temporal syndrome and homolateral hemianopia. Cerebral computed tomography revealed multiple lesions of leukoencephalitis. PCR revealed JC virus. The patient was put on corticosteroids, rehydration and nursing care. The course was marked by a progressive deterioration in the patient's neurological condition, culminating in death. We report the clinical, biological and CT features of this progressive multifocal leukoencephalitis.

Keywords: PML; JC virus; HIV.

1. INTRODUCTION

Progressive multifocal leukoencephalopathy (PML) is a central nervous system disorder characterized by the destructive infection of oligodendrocytes by a Polyomaviridae, specifically the John Cunningham virus (JC virus), or its reactivation [1]. More rarely, BK virus or SV40 virus can be causative agents [2]. The diagnosis of PML can be confirmed by detecting the presence of the JC virus in the cerebrospinal fluid (CSF) using PCR [3]. PML typically occurs in the context of immunodeficiency due to human immunodeficiency virus (HIV) infection, hematologic malignancies, various immunosuppressive and modulatory drugs, and rheumatologic disorders [3,4]. PML is now recognized as an infection that can occur in immunocompromised individuals due to HIV. Approximately 5-10% of all patients with AIDS may develop PML [5,6]. Thus, PML is considered one of the opportunistic infections with neurological localization in severely immunocompromised HIV patients [7]. The natural progression of the disease involves progressive deterioration, leading to death within a few months if the patient remains immunodeficient. PML causes progressively developing neurological deficits [8]. Initially, there are multiple demyelinating foci, sparsely distributed in the subcortical white matter. As the disease progresses, each focus enlarges as the virus spreads from cell to cell. Typically, PML pathology includes oligodendrocyte hypertrophy and widespread destruction [9]. It is rare for PML to manifest in patients without known predisposing factors in the context of presumed immunocompetence, but it has been described in numerous case reports and series [3,10]. Progressive multifocal leukoencephalitis is one of

the rare complications that can occur in immunocompromised patients. This study should enable other clinicians to consider the possibility of its occurrence in the face of presumptive clinical signs.

2. CASE PRESENTATION

This study examines a case of PML in an HIV-immunocompromised patient at the infectious and tropical diseases department of the National Hospital of Zinder. The study involved the analysis of the medical records of a patient hospitalized in October 2023. The methodology used to collect the data was based on questioning, followed by a physical examination and paraclinical tests.

Mr. HW, a 55-year-old known to be immunocompromised due to HIV for over 5 years, was non-adherent to his TDF+3TC+DTG treatment. He was admitted to the infectious and tropical diseases department of the National Hospital of Zinder. The patient had no history of autoimmune, renal, or hepatic disease, nor any history of alcohol consumption, liver disease, or malignant tumors. The reasons for hospitalization included fever, headaches, visual disturbances, language impairment, and left hemiparesis, all occurring in a non-traumatic context. These symptoms had been progressing over the past 7 months and had worsened 9 days prior to admission with the onset of dyspnea, severe acute headaches resistant to usual analgesics, persistent intense fever accompanied by chills and sweats, diffuse abdominal pain resembling a torsion, food vomiting, and a dry cough. Upon admission, the physical examination revealed a conscious patient with an oxygen saturation (SpO₂) of 98%, a weight of 62 kg, a height of

1.80 m, and a BMI of 19.13 kg/m². The clinical neurological examination was significant for spontaneous eye opening, groaning, and the inability to follow or obey commands. The patient exhibited spontaneous eye movements.

Clinical Findings:

1. Infectious syndrome: fever, tachycardia
2. Intracranial hypertension syndrome: headaches, vomiting, and visual disturbances
3. Immunodeficiency syndrome: fever, asthenia, weight loss
4. Frontal syndrome: intellectual dysfunction, impulsivity
5. Temporal syndrome: Aphasia, quadrant hemianopia, mental confusion
6. Parietal involvement: Loss of sensation

7. Occipital involvement: Homonymous hemianopia
8. Left spastic hemiparesis: predominantly affecting the face and arm given the clinical presentation and the context of immunodeficiency, a cranial computed tomography (CT) scan was performed.

These CT aspects were therefore indicative of multifocal leukoencephalopathy. A lumbar puncture was indicated and performed, revealing macroscopically clear cerebrospinal fluid with hypocellularity on cytology (03 cells/mm³). Biochemical analysis of the cerebrospinal fluid was not performed. PCR analysis of the cerebrospinal fluid identified the JC virus genome. The diagnosis of PML was definitively established based on anamnesis, clinical, biological, and CT findings. The patient

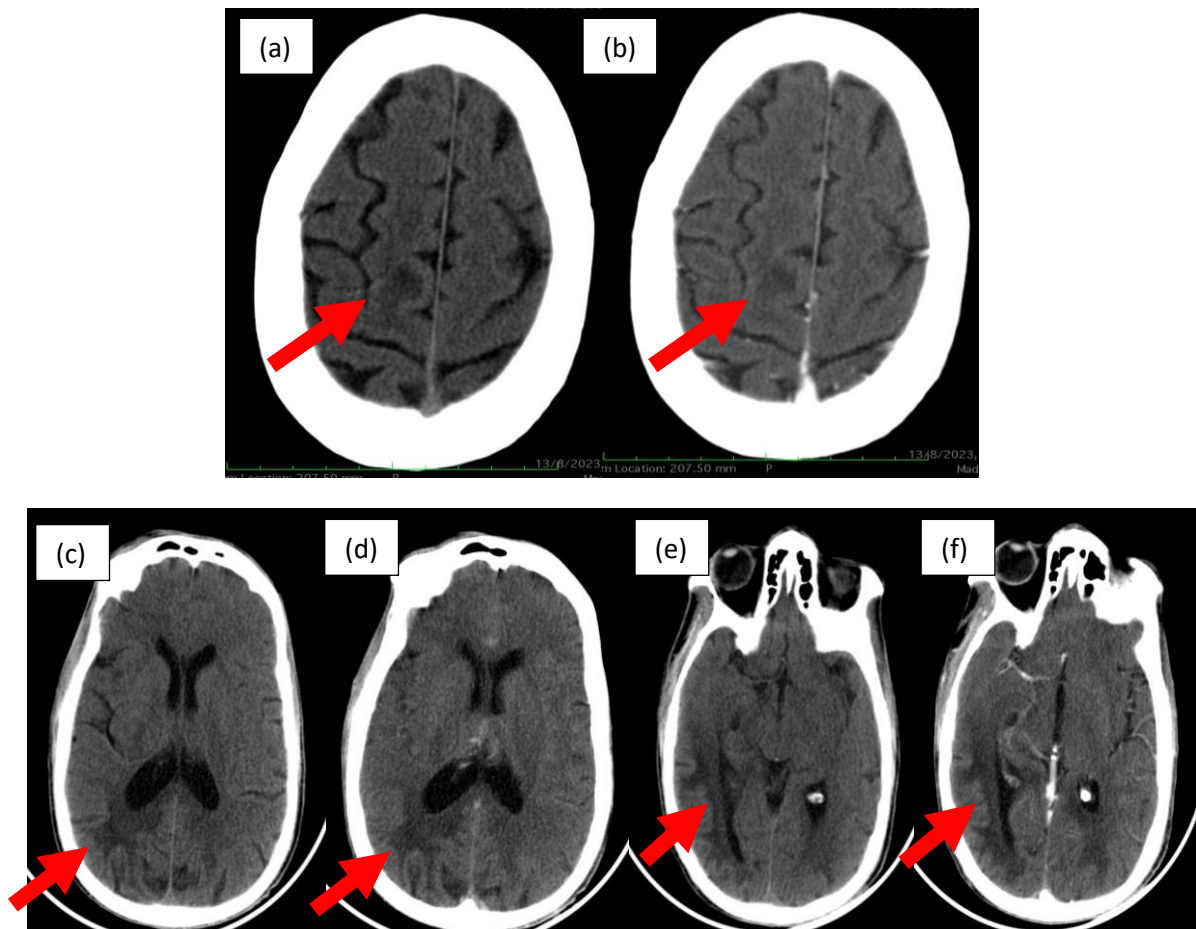


Fig. 1. The cranial CT images were acquired using helical scanning in parenchymal windows with axial slices, without contrast injection (a, c, e). These images revealed multiple hypodense foci located in the precentral frontal, periventricular, and right temporo-occipital regions, affecting the white matter while sparing the cortex and midline and showing no enhancement with contrast injection (b, d, f). Additionally, cortical and subcortical atrophy were noted

subsequently received corticosteroid therapy, intravenous hydration, and nursing care. The patient's neurological condition progressively deteriorated, and he passed away two months after hospitalization in a state of coma.

3. DISCUSSION

This case suggests that non-adherence to antiretroviral therapy (ART) was a major aggravating factor in this patient's immunodepression, thereby facilitating the onset of PML. However, PML can also occur in other immunodeficiency contexts, such as lymphoid malignancies, post-transplantation, and immunosuppressive therapies [11,12]. It is important to note that cases of PML in immunocompetent individuals have been described by Varun Jain et al. in 2023 [3].

The diagnosis of PML was based on the characteristic appearance of lesions on cranial CT scans, in conjunction with the patient's clinical context. PML is characterized by white matter alterations, predominantly in the parieto-occipital regions, as seen in our patient, and rarely affects the gray matter [13]. In this patient, a succession of different clinical manifestations occurred, starting with muscle weakness and then difficulty in speaking. Visual problems followed, and the patient remained bedridden. Headaches, episodes of vomiting, fever and hemi-body deficit gradually set in. The clinical course of this patient's symptoms contrasts with the findings of other authors [14,15]. In HIV-infected patients, PML often presents with atypical clinical features [12]. The main differential diagnosis was HIV-associated leukoencephalopathy or HIV encephalitis [9].

The CT scan findings strongly suggested PML. This underscores the importance of cranial CT in suspected PML cases, although MRI, which was not performed, could have highlighted T1 hypointense and T2 hyperintense lesions [16]. Biologically, the diagnosis of PML in this case was based on PCR analysis of the cerebrospinal fluid, which identified the JC virus. The most crucial diagnostic criterion is the PCR amplification of the JC virus from CNS tissue and/or cerebrospinal fluid [5]. JC virus infection can also be diagnosed via biopsy, revealing inclusion bodies in the nuclei of affected oligodendrocytes. PCR testing of CSF for the JC virus has revolutionized the diagnosis in recent years [17]. However, this test can yield false negatives. Therefore, it should be repeated if clinical and imaging contexts strongly suggest

the diagnosis, given its high sensitivity (up to 93%) and specificity (up to 100%). The diagnosis of PML in this patient was based on anamnesis, clinical, biological, and CT criteria [15]. Besides PML, other JC virus-related neurological conditions include JC virus granule cell neuronopathy, JC virus encephalopathy, and JC virus meningitis [18]. To date, there is no defined treatment for PML, and the prognosis is fatal in most cases [19,20].

4. CONCLUSION

Progressive multifocal leukoencephalopathy is a rare demyelinating brain infection affecting the central nervous system's white matter, predominantly occurring in HIV-immunocompromised patients. No specific treatment has proven effective to date, and death typically occurs within 1 to 9 months after onset.

DISCLAIMER (ARTIFICIAL INTELLIGENCE)

Author(s) hereby declares that NO generative AI technologies such as Large Language Models (ChatGPT, COPILOT, etc) and text-to-image generators have been used during writing or editing of manuscripts.

CONSENT

All authors declare that written informed consent was obtained from the patient for the publication of this case report and accompanying images.

ETHICAL APPROVAL

This study was conducted by ethical principles and received approval from the institutional review board (IRB) OF THE Faculty of Medical Sciences University of Zinder (FSS-UAS), NIGER. The IRB reviewed the research plan, ensuring that it adhered to ethical standards and guidelines for conducting research involving human subjects. The approval from the IRB signifies compliance with the principles of confidentiality, informed consent, and the protection of participants' rights.

ACKNOWLEDGEMENTS

The authors thank all study participants as well as the clinic staff at the National Hospital, Zinder.

COMPETING INTERESTS

Authors have declared that no competing interests exist.

REFERENCES

1. La leucoencéphalopathie multifocale progressive (LEMP) | Société canadienne de la SP [Internet]. [cité 26 déc 2023]. Available: <https://spcanada.ca/progressive-multifocal-leukoencephalopathy-pml>
2. Cortese I, Beck ES, Al-Louzi O, Ohayon J, Andrada F, Osuorah I, et al. BK virus-specific T cells for immunotherapy of progressive multifocal leucoencephalopathy: An open-label, single-cohort pilot study. *Lancet Neurol.* 1 août 2021;20(8):639-52.
3. Jain V, Branstetter H, Savaram S, Vasquez M, Swords G, Aghili-Mehrizi S, et al. Progressive multifocal leucoencephalopathy without overt immunosuppression. *Medicine (Baltimore).* 29 sept 2023;102(39):e35265.
4. Progressive neurologic dysfunction in a psoriasis patient treated with dimethyl fumarate - Bartsch - 2015 - *Annals of Neurology* - Wiley Online Library [Internet]. [cité 24 déc 2023]. Available: <https://onlinelibrary.wiley.com/doi/abs/10.1002/ana.24471>
5. Koralnik IJ. Progressive multifocal leucoencephalopathy revisited: Has the disease outgrown its name? *Ann Neurol.* août 2006;60(2):162-73.
6. The Prognosis of Progressive Multifocal Leucoencephalopathy in HIV/AIDS Patients Undergoing Highly Active Antiretroviral Treatment: A Systematic Review - PMC [Internet]. [cité 26 juill 2024]. Available: <https://www.ncbi.nlm.nih.gov/pmc/articles/PMC10575567/>
7. Berger JR. Progressive multifocal leucoencephalopathy. *Handb Clin Neurol.* 2007;85:169-83.
8. Leucoencéphalopathie multifocale progressive - StatPearls - Bibliothèque NCBI [Internet]. [cité 26 juill 2024]. Available: <https://www.ncbi.nlm.nih.gov/books/NBK560584/>
9. Berciano J. Progressive multifocal leucoencephalopathy in an immunocompetent patient. *Neurologia.* 2020;35(1):58.
10. Weissert R. Progressive multifocal leucoencephalopathy. *J Neuroimmunol.* 2011;231(1-2):73-7.
11. Progressive multifocal leucoencephalopathy presenting as a solitary gray matter lesion - PubMed [Internet]. [cité 26 déc 2023]. Available: <https://pubmed.ncbi.nlm.nih.gov/9747922/>
12. Soni N, Ora M, Mangla R, Singh R, Ellika S, Agarwal A, et al. Radiological abnormalities in progressive multifocal leucoencephalopathy: Identifying typical and atypical imaging patterns for early diagnosis and differential considerations. *Mult Scler Relat Disord.* 1 sept 2023;77:104830.
13. Fiche maladie : Leucoencéphalopathie multifocale progressive [Internet]. Radeos.org. [cité 26 juill 2024]. Available: https://www.radeos.org/maladie/fiche-leucoencephalopathie-multifocale-progressive_411.html
14. Leucoencéphalopathie multifocale progressive (LEMP) - Troubles du cerveau, de la moelle épinière et des nerfs [Internet]. Manuels MSD pour le grand public. [cité 26 juill 2024]. Available: <https://www.msmanuals.com/fr/accueil/troubles-du-cerveau,-de-la-moelle-epiniere-et-des-nerfs/infections-cerebrales/leucoencéphalopathie-multifocale-progressive-lemp>
15. Leucoencéphalite multifocale progressive :: Infections :: ePOPI [Internet]. [cité 26 déc 2023]. Available: https://epopi.fr/?page=fiche&id=374&cat_id=299&tk=66730d82444338dfb7c51de52338866
16. Leucoencéphalopathie multifocale progressive - Troubles neurologiques [Internet]. Édition professionnelle du Manuel MSD. [cité 26 déc 2023]. Available: <https://www.msmanuals.com/fr/professional/troubles-neurologiques/infections-c%C3%A9r%C3%A9brales/leucoenc%C3%A9phalopathie-multifocale-progressive>
17. Progressive Multifocal Leucoencephalopathy in AIDS: Are There Any MR Findings Useful to Patient Management and Predictive of Patient Survival? - PMC [Internet]. [cité 26 déc 2023]. Available: <https://www.ncbi.nlm.nih.gov/pmc/articles/PMC7657792/>

18. Complications neurologiques de l'infection par le virus JC: Revue générale - EM consulte [Internet]. [cité 26 déc 2023]. Available: [https://www.em-consulte.com/article/1430318/complications-neurologiques-de-l-infection-par-le-](https://www.em-consulte.com/article/1430318/complications-neurologiques-de-l-infection-par-le-virus-jc)
19. Ali F, Lemp F, Patel D, Schiers K. Fatal Purulent Pericarditis Due to Viridans Group Streptococcus. In: B51 Critical care case reports: cardiovascular diseases in the ICU II [Internet]. American Thoracic Society; 2019 [cité 26 déc 2023]:A3529-A3529. Available: https://www.atsjournals.org/doi/10.1164/ajrccm-conference.2019.199.1_MeetingAbstracts.A3529
20. Dekeyser M, De Herve MDG, Hendel-Chavez H, Labeyrie C, Adams D, Adebs-Nasser G, et al. Leuco-encéphalopathie multifocale progressive et anergie lymphocytaire réfractaire au traitement après thérapie d'inhibition du deuxième signal d'activation lymphocytaire (bêlatacept). Néphrologie Thérapeutique. 2017;13(5):308-9.

Disclaimer/Publisher's Note: The statements, opinions and data contained in all publications are solely those of the individual author(s) and contributor(s) and not of the publisher and/or the editor(s). This publisher and/or the editor(s) disclaim responsibility for any injury to people or property resulting from any ideas, methods, instructions or products referred to in the content.

© Copyright (2024): Author(s). The licensee is the journal publisher. This is an Open Access article distributed under the terms of the Creative Commons Attribution License (<http://creativecommons.org/licenses/by/4.0>), which permits unrestricted use, distribution, and reproduction in any medium, provided the original work is properly cited.

Peer-review history:

The peer review history for this paper can be accessed here:
<https://www.sdiarticle5.com/review-history/120342>