



Interactions among Noninteracting Particles in Planet Formation Simulations

Shirui Peng and Konstantin Batygin

Division of Geological and Planetary Sciences, California Institute of Technology, Pasadena, CA 91125, USA

Received 2020 June 3; revised 2020 July 11; accepted 2020 July 16; published 2020 July 31

Abstract

Over the course of recent decades, N -body simulations have become a standard tool for quantifying the gravitational perturbations that ensue in planet-forming disks. Within the context of such simulations, massive non-central bodies are routinely classified into “big” and “small” particles, where big objects interact with all other objects self-consistently, while small bodies interact with big bodies but not with each other. Importantly, this grouping translates to an approximation scheme where the orbital evolution of small bodies is dictated entirely by the dynamics of the big bodies, yielding considerable computational advantages with little added cost in terms of astrophysical accuracy. Here we point out, however, that this scheme can also yield spurious dynamical behavior where, even in the absence of big bodies within a simulation, indirect coupling among small bodies can lead to excitation of the constituent “non-interacting” orbits. We demonstrate this self-stirring by carrying out a sequence of numerical experiments, and confirm that this effect is largely independent of the time-step or the integration algorithm employed. Furthermore, adopting the growth of angular momentum deficit as a proxy for dynamical excitation, we explore its dependence on time, the cumulative mass of the system, as well as the total number of particles present in the simulation. Finally, we examine the degree of such indirect excitation within the context of conventional terrestrial planet formation calculations, and conclude that although some level of caution may be warranted, this effect plays a negligible role in driving the simulated dynamical evolution.

Unified Astronomy Thesaurus concepts: Planet formation (1241); Solar system formation (1530); N-body simulations (1083); Dynamical friction (422)

1. Introduction

The past three decades have seen staggering advances in computation, and few sub-fields of astrophysics have benefited from these developments as much as the study of planet formation. Having remained elusive for centuries, the chaotic evolution inherent to the coalescence of planetary building blocks into bona fide planets is now within reach of modern gigahertz-grade machines (Duncan et al. 1998; Chambers 1999; Rein & Liu 2012). It is with the detailed numerical modeling of this process that we will concern ourselves in this Letter. In particular, we point out that the conventional approach to modeling quasi-Keplerian, large- N -body systems is susceptible to spurious excitation of the constituent orbits, although we find that this effect is negligibly small within real astrophysical applications. Let us begin by briefly outlining the context of our calculations.

Crudely speaking, the process of planet formation can be sub-divided into two temporal scales: the disk-bearing phase (during which the central star is encircled by an extensive disk of gas and dust) and the post-nebular epoch (Lissauer 1993; Morbidelli et al. 2012; Armitage 2020) which takes place after the large-scale depletion of H and He from the system. In terms of governing physics, the former is subject to a multitude of complex gravito-hydrodynamic processes, while the latter is governed primarily by purely gravitational dynamics (see, for example, Raymond & Morbidelli 2020 for a recent review). For definiteness, here we will restrict ourselves to consideration of the latter, more qualitatively simple mode of planet formation (corresponding to the post-nebular epoch), where the buildup of planetary bodies proceeds primarily via pairwise collisions among planetesimals.

Modeling of post-nebular evolution of planetary systems is typically carried out by breaking up the calculation into three

types of constituents: big objects, small bodies, and test particles. Big objects interact with all other bodies in a self-consistent N -body fashion. Small bodies (sometimes also called semi-active particles) interact with big bodies but not with each other. Finally, test particles merely track the dynamics facilitated by the gravitational field of the big bodies, exerting no back-reaction. The reason for this categorization is two-fold. First, without this treatment, the computational burden of a typical N -body simulation would scale as $\mathcal{O}(N^2)$, with N being the total number of bodies in the problem. The big–small categorization, however, alters the computational cost of the simulation to $\mathcal{O}(N_b^2) + \mathcal{O}(N_b N_s)$, with N_b and N_s being the number of big and small bodies, respectively. Because in real planet-formation systems $N_b \ll N_s \sim \mathcal{O}(N)$, this treatment translates to a drastic reduction of computational costs.

Second, ignoring self-gravitational stirring among small bodies circumvents unphysical excitation of the orbits. This is because in an effort to keep N_s to a reasonably low number, the population of solid debris is routinely modeled as a swarm of “super-particles”—objects that trace the dynamics of planetesimals but contain much more mass than the individual bodies they represent. In turn, suppression of self-interactions within the planetesimal swarm prevents the Safronov number $\Theta = (v_{\text{esc}}/\langle v \rangle)^2$ —which regulates the efficiency of accretion (see, e.g., Safronov 1972; Lissauer 1993)—from decreasing artificially. In other words, the big–small particle characterization mimics the un-modeled effect of dynamical friction.

Owing to these advantages, the classification of non-central bodies into big and small particles is widely utilized, with important examples set within the solar system itself. In particular, over the last decade, the conglomeration of Mercury, Venus, Earth, and Mars has been modeled by various groups as the gravitational evolution of a $\sim 2M_{\oplus}$ annulus of debris where the initial mass-fraction of “big” planetary embryos to “small”

planetesimals is taken to be approximately unity (Walsh et al. 2011; Jacobson & Morbidelli 2014; see also Hansen 2009). Within the context of the outer solar system, a transient (Nice model) instability is believed to have been sparked early in the solar system’s life time by interactions among “big” planets and a $\sim 20M_{\oplus}$ disk of “small” planetesimals (Tsiganis et al. 2005; Nesvorný & Morbidelli 2012). Similarly, recent simulations of the formation of Galilean moons (Batygin & Morbidelli 2020) treat the satellite seeds as “big” objects, while modeling the much more numerous aggregate of satelliteseimals as small bodies.

In this Letter, we show that even if direct interactions are turned off, some degree of self-stirring within the disk may be unavoidable. More specifically, we carry out tests with different disk-to-star mass ratios and varying numbers of non-interacting planetesimals. The results generally show a growing trend of angular momentum deficit, indicating a gradual increase of average eccentricity in time. Numerical tests using finer time steps or integrators with higher accuracy give essentially identical results. Nevertheless, our simulations also show that the disk of debris responsible for the generation of terrestrial planets is not sufficiently massive for this effect to materialize in any appreciable manner.

The remainder of this Letter is organized as follows: Section 2 provides a description of the setup of our numerical experiments. Section 3 illustrates the key results of our simulations. In Section 4, the formation of the terrestrial planets is examined as an illustrative example. Our findings are summarized in Section 5.

2. Numerical Experiments

Swarms of planet-forming debris are routinely envisioned to emerge from their natal protoplanetary nebulae, possessing negligible eccentricities and inclinations. Evolving under self-gravitation over timescales much longer than an orbit, massive objects perturb one another, causing the effective velocity dispersion of the system to increase. However, this process is markedly not uniform, as dynamical friction is exerted upon the more massive objects by less massive bodies, causing the largest members of the planet-forming aggregate to circularize at the expense of further excitation of their smaller, but more numerous, counterparts (Safronov 1972; Lissauer 1993).

In the language of standard N -body simulations, this picture can be summarized in a straightforward manner: in an initially quiescent disk, big bodies heat each other as well as the small bodies, while small bodies only cool the big bodies. Correspondingly, if no big bodies are present in the simulation, the perfectly circular and coplanar architecture of the system should be preserved. Let us check this assertion with the aid of the state-of-the-art N -body code REBOUND (Rein & Liu 2012).

The basic setup of our numerical experiments draws upon standard planet formation simulations. In our fiducial model (M3 in Table 1), we represent the disk of planetesimals in orbit of a single central body of mass M_{\star} as $N_s = 1000$ super-particles, which cumulatively comprise a disk with mass $M_{\text{disk}}/M_{\star} = 10^{-4}$, confined to a radius range between 0.1 and 1 length units. In our unit system, we set $M_{\star} = 1$, $\mathcal{G} = 1$, and the time and space units are chosen such that an orbit with 1 semimajor axis unit has a period of $T = 2\pi$ time units, which we define as a single “year.” The radius of each body is set to zero to suppress any collisions. The semimajor axes are spread

Table 1
Model Parameters

Model	$M_{\text{disk}}/M_{\star}$	N_s	Δt^{-1} (T_{min}^{-1})	Integrator
(1)	(2)	(3)	(4)	(5)
M1	10^{-3}	1000	21	MERCURIUS
M2	5×10^{-3}	1000	21	MERCURIUS
M3	10^{-4}	1000	21	MERCURIUS
M4	5×10^{-4}	1000	21	MERCURIUS
M5	10^{-5}	1000	21	MERCURIUS
M6	10^{-3}	100	21	MERCURIUS
M7	5×10^{-3}	100	21	MERCURIUS
M8	10^{-4}	100	21	MERCURIUS
M9	5×10^{-4}	100	21	MERCURIUS
M10	10^{-5}	100	21	MERCURIUS
M11	10^{-3}	10000	21	MERCURIUS
M12	5×10^{-3}	10000	21	MERCURIUS
M13	10^{-4}	10000	21	MERCURIUS
M14	5×10^{-4}	10000	21	MERCURIUS
M15	10^{-5}	10000	21	MERCURIUS
M16	10^{-4}	1000	210	MERCURIUS
M17	10^{-4}	1000	21	IAS-15
M18	10^{-4}	1000	21	EOS
M19	10^{-4}	1000	21	JANUS
M20	10^{-4}	1000	21	LEAPFROG

Note. A summary of simulations carried out in this work. The default model is M3. In the column of Δt^{-1} , a small correction of $\epsilon T_{\text{min}}^{-1} = 10^{-3} T_{\text{min}}^{-1}$ is dropped. Our baseline integrator is MERCURIUS, which employs the Wisdom & Holman (1991) mapping. IAS-15 is a high-accuracy non-symplectic integrator with adaptive timestepping (Rein & Spiegel 2015); EOS corresponds to the embedded operator splitting methods; JANUS is an integer-based integrator (Rein & Tamayo 2018); LEAPFROG is a symplectic integrator that does not require a Kepler solver.

within the disk uniformly from 0.1 to 1.0, and all orbits are assumed to be initially circular with zero inclination. The default time step is taken to be $1/(21 + \epsilon)$ of the orbital period with a semimajor axis of 0.1 length units, where $\epsilon = 10^{-3}$ is an arbitrary small quantity. The baseline N -body integrator is the hybrid symplectic integrator MERCURIUS (Rein et al. 2019), based upon the widely used Mercury6 software package (Chambers 1999). By default, the systems are run for 6×10^5 time units (~ 0.1 Myr).

Besides the fiducial model, we perform a series of tests for different values of M_{disk} and N_s . We also test the robustness of this self-string for different time steps and integrators. A representative list of models is summarized in Table 1.

In order to avoid examining the dynamics of each simulated particle individually, we quantify the results of our simulations in terms of the angular momentum deficit (AMD) (Laskar 1997, 2000):

$$\text{AMD} = \sum_{j=1}^N (L_j - G_j) = \sum_{j=1}^N L_j (1 - \sqrt{1 - e_j^2}), \quad (1)$$

where $L_j = \mu_j \sqrt{\mathcal{G}(M_{\star} + m_j)} a_j$ and $G_j = L_j \sqrt{1 - e_j^2}$. In our situation, the reduced mass $\mu_j \approx M_{\text{disk}}/N_s \ll M_{\star}$, and $L_j \approx M_{\text{disk}} \sqrt{\mathcal{G} M_{\star}} a_j / N_s$. Importantly, low values of this quantity (1) correspond to near-circular orbits, while high

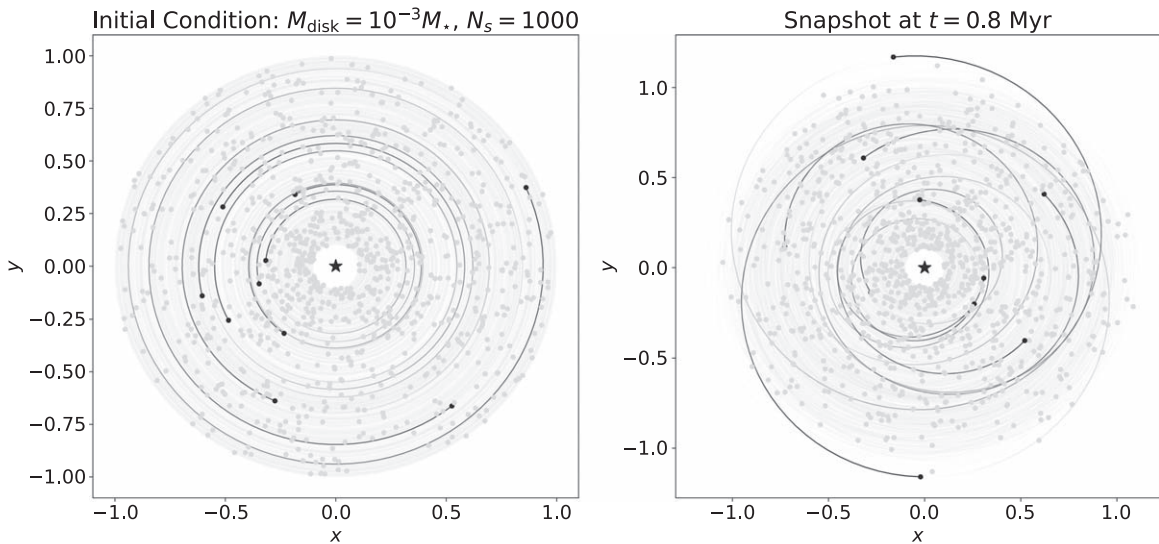


Figure 1. Initial (left) and final (right) states of model M1. The small bodies start with perfectly circular orbits, and end with overlapped eccentric orbits, despite the fact that direct gravitational interactions among the particles are suppressed. A total of 990 of the small bodies and their orbits are displayed in light gray, and 10 in black with orbits whose eccentricities evolve above the 99th percentile in the final stage. For the purposes of this example, the integration time was extended to ~ 0.8 Myr, to better illustrate the effect of self-stirring.

eccentricities give large AMD and small Θ , implying unfavorable conditions for planet formation.

3. Results

Let us begin with an illustrative example. That is, while all of our models display a certain degree of self-stirring among planetesimals in the disk, the tendency toward self-excitation is more pronounced in more massive disks. Correspondingly, as a demonstration of the described collective behavior, in Figure 1 we show an initial as well as an evolved orbital state of a $M_{\text{disk}} = 10^{-3}M_{\star}$, $N_s = 1000$ disk. More specifically, Figure 1 depicts the starting state of the disk with purely circular orbits in the left panel and a final state with overlapped eccentric orbits in the right panel, where the default integration timescale is increased by a factor of eight to accentuate the growth of eccentricities.

Of course, disks of solid debris as massive as that considered in Figure 1 are unlikely to be physical within the broader context of planet formation. Given that gravitational stability limits the mass of quasi-Keplerian disks from above to a value smaller than their aspect ratio $M_{\text{disk}}/M_{\star} \lesssim h/r \sim 0.05$ and that the typical dust-to-gas ratio of circumstellar nebulae is of order 1%, we adopt $M_{\text{disk}}/M_{\star} = 10^{-4}$ as a reasonable mass scale for our fiducial experiment, M3. The scaled AMD evolution (see below) obtained within this simulation is shown in the top left panel of Figure 2 as a black curve with a dashed-dotted line.

Dependence on time. An immediately notable feature of the depicted time series is that the growth of the scaled AMD is approximately linear. In fact, such behavior can be expected if the individual eccentricities themselves increase due to stochastic forcing (see, e.g., Puranam & Batygin 2018). This can be understood as follows. First, we note that for small eccentricities, the simplification $1 - \sqrt{1 - e^2} \approx e^2/2$ holds for the rhs of Equation (1). Second, we suppose that the progress of e is “diffusive” (see, e.g., Øksendal 2003) such that $de \approx dW$ (Wiener process) yielding $e \approx \sqrt{t}$. This assumption immediately gives $\text{AMD} \propto e^2 \propto t$ for small eccentricities.

Dependence on mass. The dependence of AMD growth upon disk mass can be reasoned out in a similar fashion. Particularly, if we postulate that $de/dt \propto M_{\text{disk}}/M_{\star}$, then $e^2 \propto (M_{\text{disk}}/M_{\star})^2 t$ and a reasonable choice of AMD. Evolution scaling would be $\text{AMD} \propto M_{\text{disk}} e^2 \propto M_{\text{disk}} (M_{\text{disk}}/M_{\star})^2 t$. If correct, then by defining the scaled AMD as

$$\text{AMD}_s = \frac{\text{AMD}}{G(0)} \left(\frac{M_{\star}}{M_{\text{disk}}} \right)^2, \quad (2)$$

it should be possible to collapse the time evolution of models with identical N_s but with different M_{disk} onto a common curve. In other words, to remove the envisioned cubic dependence of AMD growth on M_{disk} , we divide the AMD by the initial angular momentum $G(0) = \sum_{j=0}^N G_j(t=0) \propto M_{\text{disk}}$, and further scale it by the square of disk-to-star mass ratio, rendering AMD_s dimensionless.

To test this assertion, we show AMD_s growth for a series of $N_s = 1000$ models (Figure 2, top right panel), spanning $M_{\text{disk}} = 10^{-5}$ – $10^{-3}M_{\star}$ (M1–M5). The individual numerical experiments are marked with different line styles. By and large, these $N_s = 1000$ simulations exhibit approximately linear growth in scaled AMD, and the depicted curves have comparable slopes (to within a factor of ~ 2). This means that the mass scaling proposed above is satisfactory, although certainly not exact. More specifically, the three most massive disks (M1, M2, M3) tend to have indistinguishable AMD_s growth. Interestingly, the time series of the experiments with two smallest disk masses (M4, M5) also tend to overlap fairly well, but have growth rates that are notably smaller. Although of some interest, chasing down the associated correction to Equation (2) is beyond the scope of our exploratory work. Instead, we now turn our attention to the dependence of this effect upon the “resolution” of our experiments, N_s .

Dependence on N_s . Although $N_s \sim 1000$ is a routinely adopted particle count in simulations of planet-forming disks, studies employing an order of magnitude more (or fewer) particles are not uncommon in the literature (e.g., Aceves &

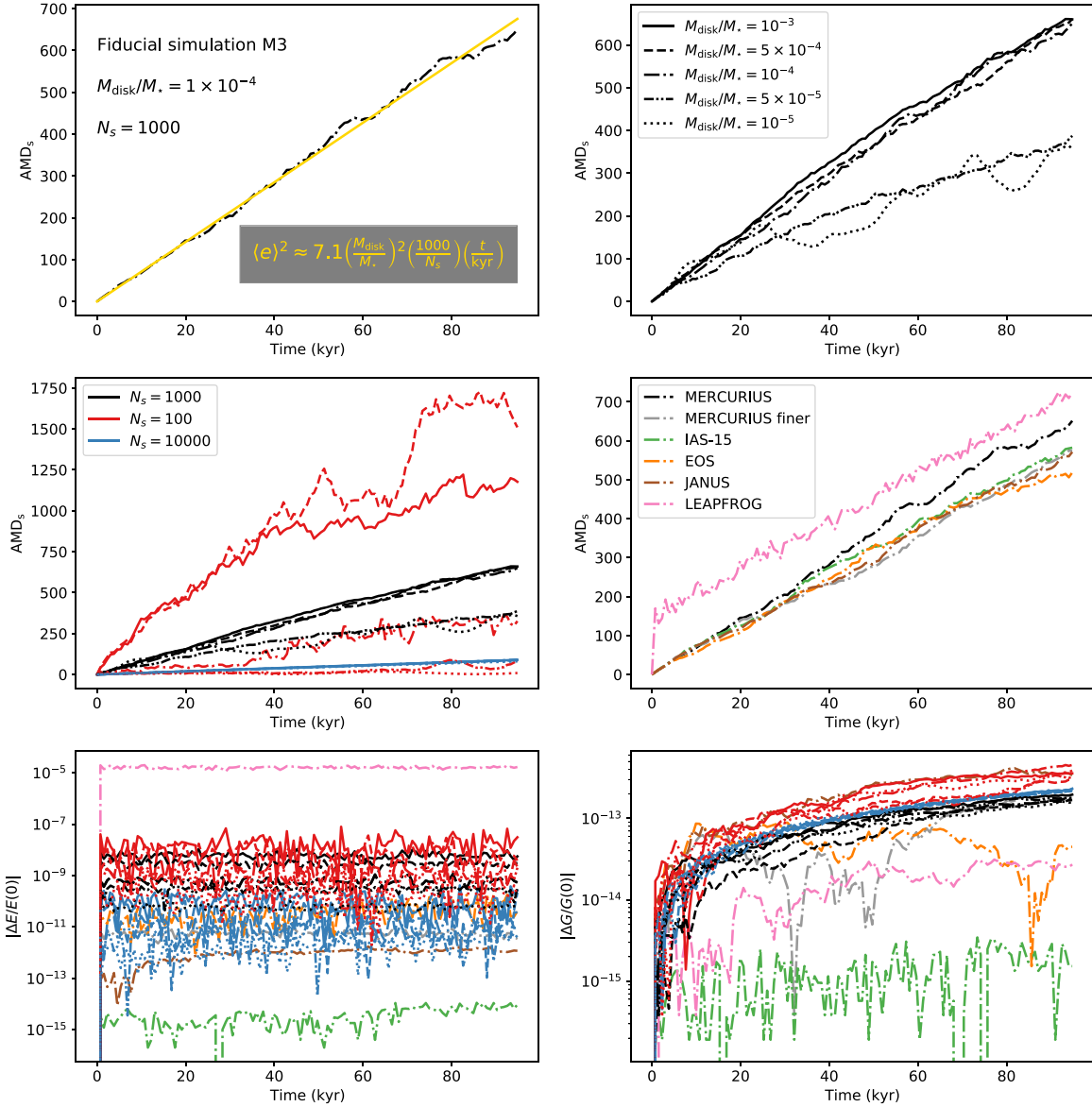


Figure 2. Results of our numerical experiments. The time series correspond to the models listed in Table 1. Different line styles indicate different M_{disk}/M_* , and different line colors indicate analytic approximation, different N_s , or numerical setups. The first two rows correspond to dependencies on time (upper left), mass (upper right), N_s (middle left), and numerical setup (middle right). The third row shows energy (left) and angular momentum (right) errors.

Colosimo 2007; Chavez 2009; Reyes-Ruiz et al. 2012; Madigan & McCourt 2016; Nesvorný & Vokrouhlický 2016, and references therein). Correspondingly, we have repeated the aforementioned numerical experiments with $N_s = 100$ (M6—M10) and $N_s = 10,000$ (M11—M15), which are shown as red and blue curves in the middle left panel of Figure 2, respectively. The qualitative features of the obtained time series are readily summarized: simulations with $N_s = 100$ exhibit more rapid and more uneven AMD_s growth than their higher- N_s counterparts. To this end, the concavity of the highest- AMD_s $N_s = 100$ models can likely be attributed to the fact that the attained eccentricities are so high that the reasoning behind quasi-linear growth outlined above no longer applies. Conversely, curves corresponding to $N_s = 10,000$ are smooth, linear, and overlap one another very well, implying that Equation (2) constitutes a better approximation for simulations with higher N_s .

In addition to the aforementioned experiments, we have also measured the characteristic Lyapunov timescale of $N_s = 1000$ experiments and found that it decreases approximately as the inverse square root of the disk mass. Specifically, for a $M_{\text{disk}} = 10^{-5}M_*$ system, $T_l \sim 250$ yr, for $M_{\text{disk}} = 10^{-4}M_*$, $T_l \sim 80$ yr, and for $M_{\text{disk}} = 10^{-3}M_*$, $T_l \sim 20$ yr. Our $M_{\text{disk}} = 10^{-4}M_*$ simulations further indicate that the Lyapunov timescale exhibits ancillary dependence on the particle count, with $N_s = 100$, $N_s = 10,000$ runs yielding $T_l \sim 250$ yr and $T_l \sim 130$ yr, respectively.

Cumulatively, the results of these experiments are consistent with an interpretation wherein the spurious growth of the angular momentum deficit is driven by perturbations that small particles exert upon the central body, which are then transmitted to other members of the system. In other words, the gravitational coupling we observe in our numerical experiments is likely facilitated in full via the indirect terms of the disturbing Hamiltonian (see Ch. 6 of Murray &

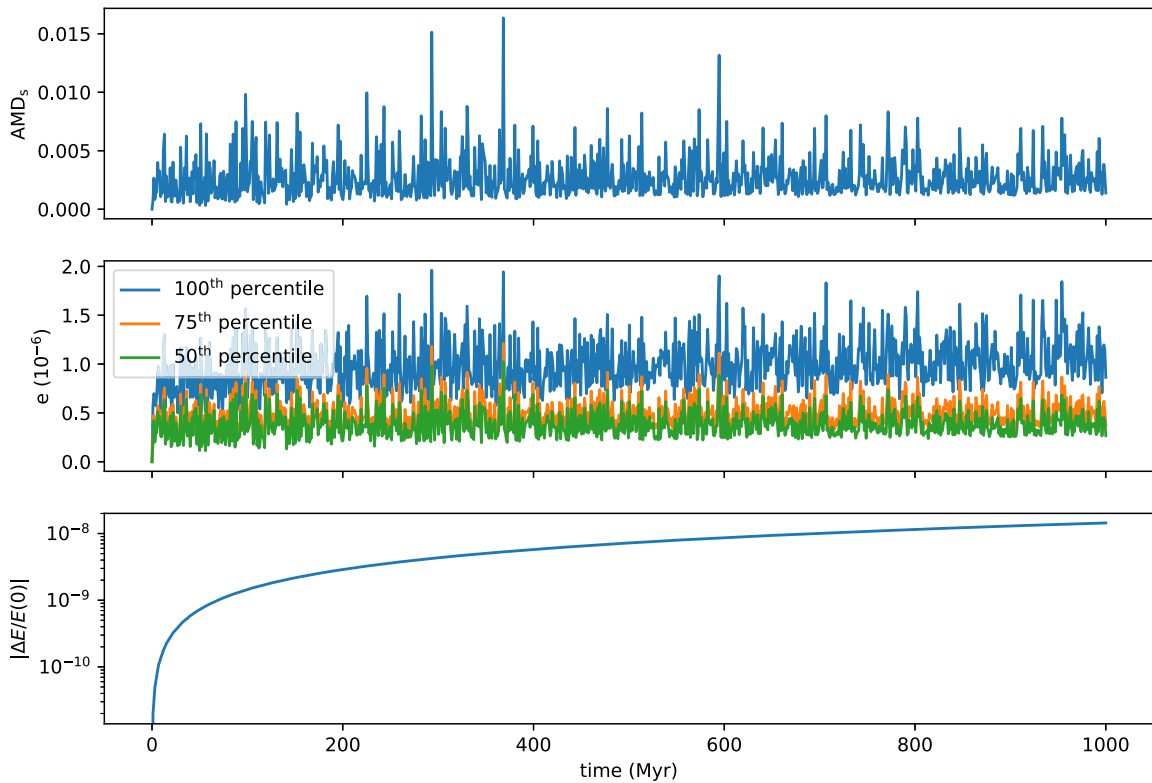


Figure 3. Evolution of terrestrial planet-forming annulus of debris, with direct interactions suppressed. The upper panel shows the evolution of AMD_s with no clear growth. The middle panel shows the evolution of three percentiles (100th, 75th, and 50th) in the eccentricity distribution. The lower panel gives the energy error of the integration.

Dermott 1999), since there are no other interaction terms in the code. It further worth noting that all indirect terms of the disturbing function average out to zero in the secular limit (where perturbations are taken to be phase-averaged), and indeed, this is the limit we approach as $N_s \rightarrow \infty$, which explains why the rate of AMD_s growth diminishes with increasing N_s . Specifically, we found that $\text{AMD}_s \propto N_s^{-1}$ via regression for $N_s \sim 1000\text{--}10,000$.

Dependence on timestep and integration method. While the aforementioned dependencies of the collective disk behavior on t , M_{disk} , and N_s appear sensible, the above discussion falls short of addressing the possibility that the dynamical behavior observed in our simulations is nothing more than a numerical artifact. Thus, as a final check on our results, we have repeated our fiducial $M_{\text{disk}} = 10^{-4}M_*$, $N_s = 1000$ simulation employing a variety of numerical setups. Specifically, we test the dependence of the observed behavior on timestep (M16, M17), as well as integration method (M17–M20). The growth of AMD_s is depicted on the middle right panel of Figure 2. Importantly, all of these numerical experiments yield consistent results, insinuating that the observed dynamical excitation is genuine, and is not a feature of any specific algorithm. We have further used the Mercury6 software package (Chambers 1999) to reproduce some of our results using the “hybrid” and Bulirsch–Stoer algorithms (Press et al. 1992), as well as the IAS-15 integrator to verify the dependence on M_{disk} , illustrated in the left panel, and obtained good agreement in all cases.

4. A Heuristic Example

Having demonstrated that indirect gravitational coupling among “small” non-interacting particles is a generic feature of N -body simulations, we are now in a position to inquire if this effect is of appreciable practical importance in real planet-formation calculations. To answer this question, we proceed by considering a specific example of post-nebular dynamical evolution already mentioned in the introduction: the assembly of terrestrial planets from a narrow annulus of rocky debris. In particular, we follow Hansen (2009) and build our terrestrial planet formation experiment by initializing a $M_{\text{disk}} = 6 \times 10^{-6}M_*$ disk of planetesimals confined between 0.7 and 1 length units in the radial direction, broken up into 1000 equal-mass bodies. The semimajor axes are taken to be spread randomly within the annulus and all orbits are assumed to be initially circular and coplanar. Finally, the time step is taken to be $\sim 5\%$ of the orbital period with a semimajor axis of 0.7 length units, and the integration is run for $2\pi \times 10^9$ time units.

The relevant time series of this simulation are summarized in Figure 3. Intriguingly, these results show no sustained self-stirring in the system. Instead, contrary to the numerical experiments reported in the previous section, AMD_s exhibits only low-amplitude fluctuations, and stays below $\text{AMD}_s \lesssim 10^{-2}$ (upper panel), as does the eccentricity distribution (middle panel), with $\langle e \rangle \lesssim 10^{-6}$. We substantiate this conclusion by repeating the experiment with different random configurations and alternative integrators, as well as with a smaller number of bodies ($N_s = 400$).

In our interpretation, the disparity between this experiment and those described above lies in that, here, M_{disk} is so low that

the indirect gravitational stirring falls below machine precision. In other words, the effect we describe herein operates only above a threshold mass of the small particle swarm. To test this assertion, we have repeated the Hansen (2009) procedure once again, boosting the disk mass to $M_{\text{disk}} = 1 \times 10^{-3} M_{\star}$ as in Figure 1, and observed growth of the angular momentum that is fully consistent with the results depicted in Figure 2. Indeed, it is likely that the precise value of the threshold mass above which indirect self-excitation ensues is both a function of N_s , as well as other details of the physical setup of the simulation such as the radial extent of the disk, surface density profile, etc.

5. Summary

In this work, we have considered the dynamical consequences of the big–small particle categorization scheme employed in conventional N -body simulations of planet-forming disks. To this end, we have carried out a series of numerical experiments that demonstrate that, even in absence of any big non-central bodies, interactions among massive small particles can still yield self-stirring within the system. We argue that this mode of dynamical excitation arises from indirect gravitational coupling, wherein perturbations are transmitted among particles via the barycentric reflex motion of the central star, induced through a superposition of individual Keplerian orbits.

Collectively, our simulation suite shows that the aforementioned effect yields a growth of the system’s angular momentum deficit that is approximately linear in time, and scales roughly as the cube of the cumulative disk mass. These results are consistent with a picture where the evolution of the individual eccentricities is driven by stochastic fluctuations, whose amplitude scales linearly with the disk mass (such that the diffusive progress of the eccentricity dispersion has the approximate form $\langle e \rangle \approx (M_{\text{disk}}/M_{\star})(1000/N_s)^{-1/2} \sqrt{7.1t/1 \text{ kyr}}$, depicted as the golden line in Figure 2, upper left panel). Our calculations further show that the obtained results are insensitive to the integration method, but do exhibit significant dependence on the simulation particle count, with large- N_s disks displaying less rapid AMD_s growth.


Finally, we have examined the role played by spurious excitation of the orbital dispersion within the context of the solar system’s terrestrial planet formation simulations (Hansen 2009; Walsh et al. 2011). Remarkably, we found no sustained growth of the velocity dispersion arising from indirect interactions among small particles, further demonstrating that this effect only operates above a certain threshold mass scale which the terrestrial planet-forming annulus does not reach. As a result, we conclude that, although some caution may be warranted in simulations of massive planetesimal disks, it is unlikely that interactions among non-interacting particles

within N -body simulations constitute a significant source of uncertainty in numerical models of planetary assembly.

We are grateful to Matthew J. Holman, Juliette C. Becker, Marguerite Epstein-Martin, Max Goldberg, Tobias Koehne and Elizabeth Bailey for insightful discussions. Additionally, we would like to thank Hanno Rein for providing a thorough and insightful referee report which led to a considerable improvement of the manuscript, as well as his assistance with implementation of numerical experiments. K.B. is grateful to the David and Lucile Packard Foundation and the Alfred P. Sloan Foundation for their generous support. Simulations in this paper made use of the REBOUND code which is freely available at <http://github.com/hannorein/rebound>.

ORCID iDs

Shirui Peng  <https://orcid.org/0000-0002-4616-4604>

Konstantin Batygin  <https://orcid.org/0000-0002-7094-7908>

References

- Aceves, H., & Colosimo, M. 2007, *AmJPh*, **75**, 139
- Armitage, P. J. 2020, *Astrophysics of Planet Formation* (2nd ed.; Cambridge: Cambridge Univ. Press)
- Batygin, K., & Morbidelli, A. 2020, *ApJ*, **894**, 143
- Chambers, J. E. 1999, *MNRAS*, **304**, 793
- Chavez, C. E. 2009, *Icar*, **203**, 233
- Duncan, M. J., Levison, H. F., & Lee, M. 1998, *AJ*, **116**, 2067
- Hansen, B. M. S. 2009, *ApJ*, **703**, 1131
- Jacobson, S. A., & Morbidelli, A. 2014, *RSPTA*, **372**, 0174
- Laskar, J. 1997, *A&A*, **317**, L75
- Laskar, J. 2000, *PhRvL*, **84**, 3240
- Lissauer, J. J. 1993, *ARA&A*, **31**, 129
- Madigan, A.-M., & McCourt, M. 2016, *MNRAS*, **457**, L89
- Morbidelli, A., Lunine, J. I., O’Brien, D. P., et al. 2012, *AREPS*, **40**, 251
- Murray, C. D., & Dermott, S. F. 1999, *Solar System Dynamics* (Cambridge: Cambridge Univ. Press)
- Nesvorný, D., & Morbidelli, A. 2012, *AJ*, **144**, 117
- Nesvorný, D., & Vokrouhlický, D. 2016, *ApJ*, **825**, 94
- Øksendal, B. 2003, *Stochastic Differential Equations: An Introduction with Applications* (6th ed.; Berlin: Springer)
- Press, W. H., Teukolsky, S. A., Vetterling, W. T., et al. 1992, *Numerical Recipes in FORTRAN: The Art of Scientific Computing* (2nd ed.; Cambridge: Cambridge Univ. Press)
- Puranam, A., & Batygin, K. 2018, *AJ*, **155**, 157
- Raymond, S. N., & Morbidelli, A. 2020, arXiv:2002.05756
- Rein, H., Hernandez, D. M., Tamayo, D., et al. 2019, *MNRAS*, **485**, 5490
- Rein, H., & Liu, S.-F. 2012, *A&A*, **537**, A128
- Rein, H., & Spiegel, D. S. 2015, *MNRAS*, **446**, 1424
- Rein, H., & Tamayo, D. 2018, *MNRAS*, **473**, 3351
- Reyes-Ruiz, M., Chavez, C. E., Aceves, H., et al. 2012, *Icar*, **220**, 777
- Safronov, V. S. 1972, *Evolution of the Protoplanetary Cloud and Formation of the Earth and Planets* (Jerusalem: Keter Publishing House)
- Tsiganis, K., Gomes, R., Morbidelli, A., et al. 2005, *Natur*, **435**, 459
- Walsh, K. J., Morbidelli, A., Raymond, S. N., et al. 2011, *Natur*, **475**, 206
- Wisdom, J., & Holman, M. 1991, *AJ*, **102**, 1528