



## **Breathomics of Respiratory Diseases**

**Vladimir M. Aroutiounian <sup>a\*</sup>**

<sup>a</sup> *Yerevan State University, Armenia.*

### **Author's contribution**

*The sole author designed, analysed, interpreted and prepared the manuscript.*

### **Article Information**

DOI:10.9734/JAMMR/2022/v34i2131521

### **Open Peer Review History:**

This journal follows the Advanced Open Peer Review policy. Identity of the Reviewers, Editor(s) and additional Reviewers, peer review comments, different versions of the manuscript, comments of the editors, etc are available here: <https://www.sdiarticle5.com/review-history/86696>

**Review Article**

**Received 18 March 2022**

**Accepted 07 May 2022**

**Published 09 August 2022**

## **ABSTRACT**

In humans, respiratory disorders are common. Today, rapid, risk-free, and potentially low-cost diagnostics of respiratory disorders detected in the patient's exhaled air are critical. Fractional exhaled nitric oxide (FENO), volatile organic molecules, carbon monoxide, hydrocarbons, and hydrogen peroxide are among the inhaled biomarkers mentioned. Breathomics from exhaled volatile organic compounds and oximeters are also shortly discussed. The use of WO<sub>3</sub> in FENO monitors is discussed. They large-scale produced and widely used in medical centers and clinics for diagnostics of respiratory diseases. Promising semiconductor sensors are manufactured from SnO<sub>2</sub>, doped with Pd, Au, or Pt or multi walls carbon nanotubes, gold nanoparticle with single wall carbon nanotubes, quartz microbalance devices with porphyrin, ITO –Zno-Pt films, and surface acoustic wave devices with isobutylene. A combination of VOCs is considered as a “molecular fingerprint” of breath. The electronic nose on metal oxide detectors allows investigating lung cancer and tuberculosis.

**Keywords:** *Obstructive sleep apnea syndrome; ypertension; tuberculosis; cystic fibrosis; bronchiectasis; rhinitis; interstitial lung disease; panbronchioliti; obstructive sleep apnea syndrome.*

## **1. INTRODUCTION**

Respiratory diseases include asthma, chronic obstructive pulmonary disease (COPD), lung

cancer, pulmonary arterial hypertension, tuberculosis, cystic fibrosis, bronchiectasis, rhinitis, interstitial lung disease, chronic cough, lung transplant rejection, adult respiratory

\*Corresponding author: E-mail: [kisahar@ysu.am](mailto:kisahar@ysu.am);

distress syndrome, diffuse panbronchiolitis, obstructive sleep apnea syndrome and pneumoconiosis. Rapid, risk-free and potentially inexpensive diagnostics of respiratory diseases observed in the patient's exhaled air is very important today [1,2]. It is impossible within the frames of this article to provide detailed information on the achievements in the field of respiratory diseases, and series of tests, including chemical, imaging, endoscopic, immunological and genomic procedures for the detection of all these diseases [1-3]. Detection of respiratory diseases at an early stage can significantly reduce the consequences of the disease and mortality [1,4], as this allows for surgical intervention/treatment with the prospect of achieving the best possible therapeutic outcome for the patient. The development of new tests and biomarkers is necessary because current sputum, radiography, and computed tomography (CT) tests are expensive, invasive (endoscopy, pulmonary catheterization, biopsy, and bone marrow tests), and do not rule out complications and/or require special equipment (for example, CT), and highly qualified medical workers for its operation [1,5]. An ideal respiratory disease test should be highly accurate, low cost, non-invasive and easily reproducible.

## 2. FRACTIONAL EXHALED NITRIC OXIDE BIOMARKER

Much attention has been paid recently to metal oxide gas sensors, which are promising for use in medicine (see, e.g., [6-8]). The most popular biomarker for the respiratory disease today is fractional exhaled nitric oxide NO (FENO). The potential of tungsten trioxide ( $WO_3$ ) gas sensors for breath analysis is discussed in [9].  $WO_3$  is an oxygen-deficient n-type semiconductor. It is one of the most commonly used materials for the manufacture of semiconductor gas sensors. They are small, reliable, inexpensive, and highly sensitive, which make them promising for portable medical diagnostic detectors.  $WO_3$  responds to several biomarkers found in exhaled air (nitric oxide, acetone, ammonia, carbon monoxide, hydrogen sulfide, toluene etc.) and allows comparison of probing results with those obtained using much more expensive analytical methods. Analyzing a patient's breathing is an extremely interesting field of application for gas sensors. Such small-sized instruments allow real-time measurements.

Righettoni et al. reported the detection of acetone in human breath using a sensor made of

Si-doped  $WO_3$  [8]. Breath analysis of asthma using nitric oxide was reported today using  $WO_3$ -based sensors in [30–32]. Its resistance decreases when exposed to reducing gas and increases in the presence of oxidizing gases [39]. Some basic research exists on the interaction of the  $WO_3$  surface with gases. For example, it is known that CO reduces the  $WO_3$  lattice [40]. Akamatsu et al. investigated the surface reaction of  $WO_3$  with  $NO_2$  and NO. Oxidation of the surface was visible during exposure to  $NO_2$  [9]. A slight reduction was visible with NO.

“During inhalation air enters through the mouth and nostrils into the pharynx, then passes the epiglottis into the trachea, and finally enters the bronchi which branch into bronchioles that end in clusters of alveoli (see Fig. 1). The exchange of air with the bloodstream takes place in the Alveoli” [9]. The total exhaled breath contains a combination of the alveolar air and the air originating from the physiological dead space (air originating from the nasal/oral cavity, pharynx, larynx, trachea and bronchi).

Asthmatic patients exhale between 20 and 25 ppb >30 ppb of NO, whereas a healthy population exhales lower concentrations [17]. “Portable NO-selective sensors are already used to detect asthma, generally being sensitive to NO levels of <1 ppb, with a rapid response time” [68]. “Sensors array have given a higher degree of diagnostic accuracy for asthma than exhaled NO” [14, 44].

Most popular detectors for measuring the amount of nitrogen monoxide (NO) are produced by the Siemens and Bosch companies (Figs. 2 and 3) [21, 22]. The Siemens device is the size of a mobile phone and works by analyzing a patient's breath and measuring the amount of nitrogen monoxide (NO). The Siemens device will help asthma sufferers predict attacks. It is so sensitive it can measure amounts as small as one ppb (part per billion). Heightened levels signal that an asthma sufferer's air passages are about to become inflamed. This latent inflammation generally spreads hours before a patient becomes aware that anything is wrong. The prototype device will allow patients to analyze their breath themselves and take the minimum amount of preventive medication when necessary.

Specification of the monitor: Concentration range: 5-300ppb nitric oxide, Sensor sensitivity: 5ppb, Breath test time: Adult 12 seconds, Child 10 seconds, Operating temperature range: 10-

30°C (ambient), Maximum ambient operating level: 350ppb NO.

Bosch Healthcare Solutions (USA) also developed small-size devices for measuring the amount of nitrogen monoxide (NO) (see Fig. 4).

### 3. VOLATILE ORGANIC COMPOUNDS BIOMARKERS FOR RESPIRATORY DISEASES AND THEIR SPECIFIC

Volatile organic compounds (VOCs) are also known as biomarkers for respiratory diseases. The monitoring of them by breath analysis is noninvasive. Specific of respiratory diseases are discussed below.

“Obstructive pulmonary disease (COPD) is characterized by oxidative stress and the production of VOCs secreted by the lungs” [1]. “Since both COPD and asthma patients have chronic airway inflammation, COPD patients could be misdiagnosed as asthmatics and vice versa. It is essential to clearly differ COPD from asthma in the case of elderly people who have systemic corticosteroids” [1]. Is proposed to use an array of quartz crystal microbalance sensors

coated with metal porphyrins in order to solve this problem. VOCs have been found in the exhaled breath of lung cancer patients [8, 24-33], and efforts have been realized the early detection of lung cancer using exhaled breath [34-35, 36]. Di Natale et al. reported in [37] how it is possible to differ patients with lung cancer versus healthy subjects by using the same quartz crystal microbalance sensors coated with porphyrins. The Pt-, Pd-, and Au-loaded SnO<sub>2</sub> sensors were used for PCA and discriminate analysis [38]. A SAW detector coated with a film of isobutylene correctly diagnosed patients with lung cancer at room temperature and sub-ppb concentration [39, 40]. Haick and co-workers. [41-44] “successfully discriminated early and late stages of lung cancer, distinguish between small cell lung carcinoma and non-small cell carcinoma, as well as in differentiating between adenocarcinoma and squamous cell carcinoma with high accuracy, respectively. One gold nanoparticle (GNP) sensor could differentiate patients with lung cancer before and after surgery”. Single-walled carbon nanotubes - based sensors array also was used to discriminate patients with lung [42, 45].

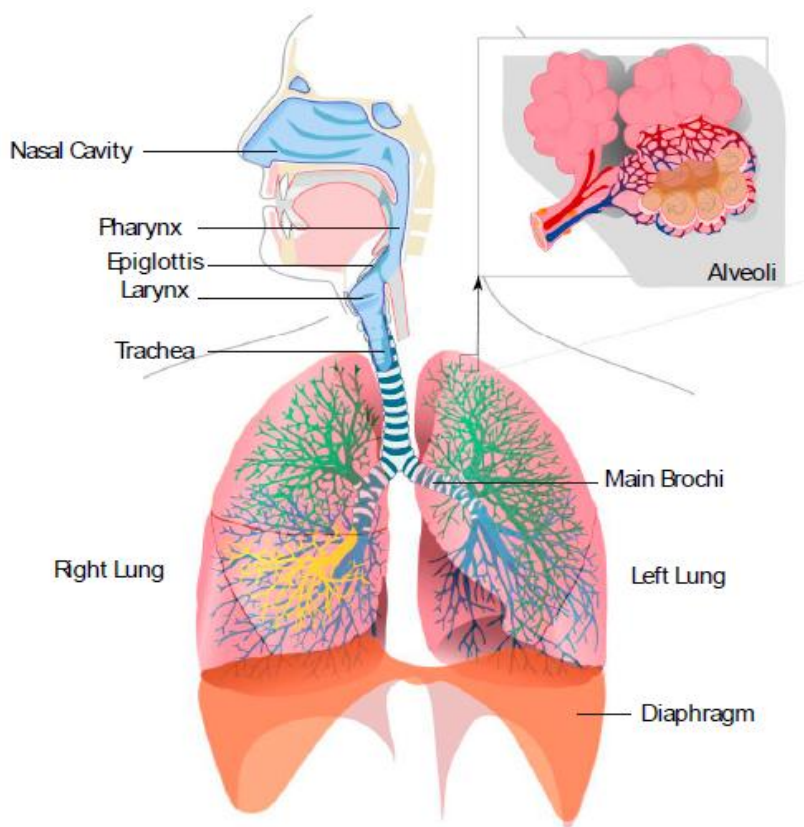


Fig. 1. Basic picture of the respiratory system [9]



**Fig. 2. Siemens device for measuring the amount of nitrogen monoxide**



**Fig. 3. BedfontNObreathFeNO Monitor [23]**



**Fig. 4. small-size devices for measuring the amount of nitrogen monoxide**

“Exhaled breath of patients with pulmonary arterial hypertension (PAH) had raised concentrations of 2-nonene, 2-propanol, acetaldehyde, ammonia, ethanol and pentane

compared with control subjects, whereas 1-decene and 1-octene were significantly lower” [46-50]. Cohen-Kaminsky et al. [51] have established that “GNP-based sensors can

successfully detect and classify PAH. The results showed that the breath signatures of patients with lung cancer differed from PAH" [52]. All results were not influenced by sex, and age of patients.

The development of a rapid, affordable, and noninvasive assay is needed for tuberculosis TB screening [53, 54]. New devices for diagnosis of (TB) were proposed (the Xpert MTB/RIF assay etc) [55]. Phillips et al. [56] suggested "biomarkers in oxidative stress products, such as alkanes and alkane derivatives, and volatile metabolites of mycobacterium tuberculosis, such as cyclohexane and benzene derivatives". GNP and molecularly modified single-walled CNTswere proposed by Nakhlen et al. [55] for the detection of active TB. Another group used a sensors array composed of eight metalloporphyrin-coated QMB sensors to assess the exhaled breath of patients with TB during treatment [54].

"Obstructive sleep apnoea syndrome (OSAS) is a common disease associated with an increased risk for cardiovascular disorders" [57]. "The polymer composite-based sensors were utilized in the discrimination of OSAS between healthy controls" [58]. Incalzi et al. [59] used the quartz-based sensors array to show that breath-prints of patients with OSAS largely depends upon diabetes mellitus, metabolic syndrome and chronic heart failure.

Incalzi et al. [59] used the quartz-based sensors array to show that breath-prints of patients with obstructive sleep apnoea syndrome. Significantly change after a single night is largely depends upon studied comorbidities like diabetes mellitus, metabolic syndrome and chronic heart failure. Inflammation during monitoring of cystic fibrosis arises before clinical symptoms appear [60, 61]. FeNO is the most extensively studied marker in exhaled breath in some pulmonary diseases, including cystic fibrosis [62]. It was also impossible to differentiate non-chronically infected patients with CF from patients with CF having other chronic pulmonary infections with other pathogens [1].

"Sensor arrays are potentially becoming convenient devices for physicians in the detection and monitoring of therapy of patients with respiratory diseases. Improvement in sensor technologies, machine-learning methods, disease-specific reference libraries and databases, in addition to the identification of

respiratory disease biomarkers, have all contributed to the advance in diagnostic methods based on exhaled breath" [63, 64]. Note in discussing of some future perspectives and concluding remarks that "the relative humidity of exhaled breath may vary and influence measurements; water absorption reduces the sensitivity of metal oxide sensors by preventing electron donation to the surface charge layer. Alternatively, gold or platinum metal monolayer-capped nanoparticle chemiresistors have low sensitivity to water. One of the most crucial aspects of nanomaterial-based sensor technology is data analysis; the digital outputs generated by the sensors have to be analyzed and interpreted in order to provide useful information. The choice of method depends on the type of available input data acquired from the sensors and the type of information that is sought" [65]. "Sensor response to VOCs can be analyzed by pattern recognition algorithms to classify different cases individually, in which the principal component reduction and subsequent pattern recognition by discriminant analysis are the most frequently used types of raw-data analysis for their responses" [66]. "Other techniques are also used for data analysis, such as machine-learning algorithms and neural networks. These techniques mimic the cognitive process of the human brain, containing interconnected data processing algorithms that work in parallel" [65]. The results of the artificial neural network data analysis are usually in the form of a percentage match of identification elements in a given breath sample with those of VOC patterns seen in a training set-up. The diversity of analytical techniques that are available may hinder the standardization of sensors array technologies, and consequently, special care must be given to avoid overfitting the training data and validation sets.

#### **4. EXHALED CARBON MONOXIDE BIOMARKERS**

Degradation of hemoglobin leads to exhalation of carbon monoxide (CO) via the alveoli [61]. CO can be quantified by a number of different techniques. The measurements of CO in humans gives reproducible results [67] by adjustable laser spectrophotometer [68], or by a near-infrared CO analyzer [69]. Sensitive and stable near-IR instruments are used for continuous monitoring of stable asthma [70], [71] and patients treated with inhaled corticosteroids, but the effect of inhaled steroids on exhaled CO in patients with mild asthma is negligible. The

cigarette smoking masks influence of CO when the COPD, chronic bronchitis, and bronchiectasis diseases are investigated [72].

In contrast to NO, exhaled CO levels were markedly increased in patients with stable cystic fibrosis (CF) and allergic rhinitis [73-75], and reduced with antibacterial and corticosteroid treatment, which is related to lung function deterioration [74, 75].

## 5. EXHALED HYDROCARBONS MARKERS

The main source of exhaled hydrocarbons in the body is the liver. Studies of ethane and pentane in exhaled breath were carried out for newborns [76]. Pentane and isoprene are increased in normal smokers, and ethane in patients with COPD who smoke. To distinguish asthma from obstructive sleep apnea, two different exhaled markers (NO and pentane) are used [77]. "Elevated levels of exhaled and nasal NO, but not pentane, have been found in patients with sleep apnea. Patients with CF have elevated levels of exhaled ethane, which is significantly correlated with exhaled CO and airway obstruction" [73]. Exhaled breath profile of different hydrocarbons has been shown in patients with lung cancer [78]. Pentane elimination was increased, but isoprene elimination was reduced in the case of pulmonary infection in comparison with patients without pulmonary infection. A significant increase of exhaled ethane was observed in patients undergoing cardiopulmonary bypass operations.

## 6. HYDROGEN PEROXIDE MARKERS

Exhaled H<sub>2</sub>O<sub>2</sub> is a marker of oxidative stress in the lungs. H<sub>2</sub>O<sub>2</sub> has been detected in exhaled condensate in patients with increased concentrations in asthma [79, 80]. "Fivefold higher level of H<sub>2</sub>O<sub>2</sub> have been found in exhaled breath condensate of smokers with stable COPD [81] than in nonsmokers. Concentrations of 8-isoprostane in the breath condensate of patients with stable CF are increased about threefold compared with those in normal subjects" [83].

Many different sensors were developed-fuel cell aldehyde sensor[84], sensor prepared using ITO (Indium Tin Oxide) substrate spin-coated with ZnO layer, that was prepared by sol-gel technique and thermal evaporation [85]. Platinum were placed over the ZnO. An electronic nose is

used in the discrimination of patients with non-small cell lung cancer and COPD [86, 87]. Exhaled breath analysis using electronic nose was carried out for non-invasive diagnosis of chronic kidney disease, and diabetes mellitus [88]. Our patent [89] is suggested for detection of respiratory diseases.

## 7. BREATHOMICS FROM EXHALED VOLATILE ORGANIC COMPOUNDS

Asthma is a complex disease and for its monitoring a combination of VOCs is needed, that can be considered as a "molecular fingerprint" of exhaled breath. A "breathome" termin is proposed for such fingerprint, and "breathomics" describing for its [90-92]. The analysis of VOCs in exhaled by asthmatic breath is an non-invasive approach, that has not yet reached clinical practice.

"Several spectrometry and spectroscopy techniques have been used to collect, detect and analyses exhaled VOCs of respiratory diseases" [93-97]. "Techniques including proton transfer reaction-mass spectrometry (MS), selected ion flow tube (SIFT)-MS, ion mobility spectrometry, laser spectroscopy and gas chromatography (GC) are commonly used. But this equipment is powerful but rather expensive" [98]. Therefore, chemical sensors are proposed, that, as usually, changed their electrical resistivity due to contact with VOCs [100]. Surface acoustic wave (SAW) sensors were used as a detector for the breath analysis, as well as acoustic and colorimetric sensors [101, 102].

## 8. OXYMETERS

The level of oxygen (or oxygen saturation) in the blood can be measured using a pulse oximeter [103] in the case of respiratory disease. A clip-like sensor device that is placed on body of patient. Pulse oximetry is used to assess oxygen saturation in the blood, and often used in surgeries and bronchoscopy) and assess whether an adjustment of supplemental oxygen is needed, whether lung medications are working effectively, and to determine patient tolerance to make any adjustments of supplemental oxygen. Pulse oximetry may also recommend if patient uses a ventilator to support breathing, suffer from sleep apnea, COPD, lung cancer, asthma, or pneumonia as well as heart attack, congestive heart failure, anemia disease. Oximeters use in all cases when it is necessary to measure the level of oxygen in the body.





**Fig. 5. Pulse oximeter [103]**

A device contains a light source, light detector, and microprocessor, which compares and calculates the differences in oxygen-rich versus oxygen-poor hemoglobin. One side of the probe contains a light source with two different types of light: infrared and red. These two types of light are transmitted through the body's tissues to the light detector on the other side of the probe.

Hemoglobin that is more saturated with oxygen absorbs more of the infrared light, while hemoglobin without oxygen absorbs more of the red light. The microprocessor in the probe calculates the differences and converts the information to a digital value. Measurements of relative light absorption are made multiple times every 0.5-1 second. The readings of the last 3 seconds are then averaged out. Several different types of pulse oximeters are available. The most popular are portable handheld and fingertip pulseoximeters. That can be purchased in drug stores.

## 9. CONCLUSIONS

Rapid, and potentially inexpensive diagnostics of respiratory diseases observed in the patient's exhaled air is extremely important today. The following exhaled biomarkers are discussed: fractional exhaled nitric oxide (FENO), volatile organic compounds, carbon monoxide, hydrocarbons, and hydrogen peroxide. Breathomics from exhaled VOCs and oximeters are also shortly discussed.

FENO monitors made of  $WO_3$  are large-scale produced and widely used in medical centers and clinics for diagnostics of respiratory diseases. Promising semiconductor sensors are manufactured from  $SnO_2$ , doped with Pd, Au, or Pt or multi walls carbon nanotubes, gold nanoparticle with single wall carbon nanotubes,

quartz microbalance devices with porphyrin, ITO-Zno-Pt films, and surface acoustic wave devices with isobutylene. A combination of VOCs is considered as a "molecular fingerprint" of breath. The electronic nose on metal oxide detectors allows investigating lung cancer and tuberculous.

## CONSENT

It is not applicable.

## ETHICAL APPROVAL

It is not applicable.

## COMPETING INTERESTS

Author has declared that no competing interests exist.

## REFERENCES

1. Hashoul D, Haick H. Advances in the evaluation of respiratory pathophysiology during exercise in chronic lung diseases. *EurRespir Rev.* 2019;28:1900110.
2. Gasparri R, Sedda G, Spaggiari L. The electronic Nose's emerging role in respiratory medicine. *Sensors (Basel).* 2018;18(9):E3029.
3. Broza YY, Vishinkin R, Barash O, Nakhleh MK, Haick H. Synergy between nanomaterials and volatile organic compounds for non-invasive medical evaluation. *ChemSoc Rev.* 2018;47(13):4781-859.
4. Azar FE, Azami-Aghdash S, Pournaghi-Azar F, Mazdaki A, Rezapour A, Ebrahimi P, et al. Cost-effectiveness of lung cancer screening and treatment methods: a

- systematic review of systematic reviews. *BMC Health Serv Res.* 2017;17(1):413.
5. Nardi-Agmon I, Peled N. Exhaled breath analysis for the early detection of lung cancer: recent developments and future prospects. *Lung Cancer (Auckl).* 2017;8:31-8.
  6. V(M). Aroutiounian decrease in operation temperature of zinc oxide nanomarkers. *J NanomedNanotechnol.* 2020;11, 1.
  7. VM. Aroutiounian acetone sensor made of tin dioxide. *J ContempPhys (Armenian AcadSci).* 2020;55:213-24.
  8. V(M). Aroutiounian non-invasive metal oxide sensors on exhaled acetone *Ibid.* 2021:56. 4.
  9. Staerz A, Weimar U, Barsan N. Understanding the potential of WO<sub>3</sub> based sensors for breath analysis sensors. 2016;16:1815.
  10. Righettoni M, Amann A, Pratsinis SE. S.E. Pratsini Breath analysis by nanostructured metal oxides as chemo-resistive gas sensors. *Mater Today.* 2015;18(3):163-71.
  11. Gouma PI, Kalyanasundaram KA. A selective nanosensing probe for nitric oxide. *ApplPhysLett.* 2008;93(24):1.
  12. Moon HG, Choi YR, Shim YS, Choi KI, Lee JH, Kim JS et al. Extremely sensitive and selective NO probe based on villi-like WO<sub>3</sub> nanostructures for application to exhaled breath analyzers. *ACS Appl Mater Interfaces.* 2013;5(21):10591-6.
  13. Fruhberger B, Stirling N, Grillo FG, Ma S, Ruthven D, Lad RJ et al. Detection and quantification of nitric oxide in human breath using a semiconducting oxide based chemiresistivemicrosensor. *Sens Actuators B.* 2001;76(1-3):226-34.
  14. Long H, Zeng W, Zhang H. Synthesis of WO<sub>3</sub> and its gas sensing: a review. *J Mater Sci Mater Electron.* 2015;26(7):4698-707.
  15. Hübner M, Simion CE, Haensch A, Barsan N, Weimar U. CO sensing mechanism with WO<sub>3</sub> based gas sensors. *Sens Actuators B.* 2010;151(1):103-6.
  16. Akamatsu T, Itoh T, Izumi N, Shin W. NO and NO<sub>2</sub> sensing properties of WO<sub>3</sub> and Co<sub>3</sub>O<sub>4</sub> based gas sensors. *Sensors (Basel).* 2013;13(9):12467-81.
  17. Struben VMD, Wieringa MH, Mantingh CJ, Bommeljé C, Don M, Feenstra L et al. Nasal NO: normal values in children age 6 through to 17 years. *EurRespir J.* 2005; 26(3):453-7.
  18. Gouma P, Sood S, Stanacevic M, et al. Zinc oxide-based acetone gas sensors for breath analysis: a review *Med. Rep.* 2010;2(56).
  19. Li XL, Lou TJ, Sun XM, Li YD. Highly Sensitive WO<sub>3</sub> hollow-sphere gas sensors. *Inorg Chem.* 2004;43(17):5442-9.
  20. Barsan N, Weimar U, Yoon SF, Ahn J. Conduction model of metal oxide gas sensors. *J Electroceram.* 2001;7(1):13-6 (201).
  21. Available:<http://www.healthcare.siemens.com/laboratory-diagnostics>.
  22. Available: [www.vivaatmo.com](http://www.vivaatmo.com) Bosch Healthcare Solutions GmbH Techniks fur Leb
  23. Bedfont® NObreath® FeNO Monitor
  24. Jia Z, Zhang H, Ong CN, Patra A, Lu Y, Lim CT, et al. Detection of lung cancer: concomitant volatile organic compounds and metabolomic profiling of six cancer cell lines of different histological origins. *ACS Omega.* 2018;3(5):5131-40.
  25. Miekisch W, Schubert JK, Noeldge-Schomburg GF. Exhaled volatile organic compounds in patients with non-small cell lung cancer: cross sectional and nested short-term follow-up study. *ClinChimActa.* 2004;347(1-2):25-39.
  26. Buszewski B, Keszy M, Ligor T, Amann A. Human exhaled air analytics: biomarkers of diseases. *Biomed Chromatogr.* 2007;21(6):553-66. doi: 10.1002/bmc.835, PMID 17431933.
  27. Kischkel S, Miekisch W, Sawacki A, Straker EM, Trefz P, Amann A et al. Breath biomarkers for lung cancer detection and assessment of smoking related effects--confounding variables, influence of normalization and statistical algorithms. *ClinChimActa.* 2010;411(21-22):1637-44.
  28. Peng G, Hakim M, Broza YY, Billan S, Abdah-Bortnyak R, Kuten A, et al. Detection of lung, breast, colorectal, and prostate cancers from exhaled breath using a single array of nanosensors. *Br J Cancer.* 2010;103(4):542-51.
  29. Bajtarevic A, Ager C, Pienz M, Klieber M, Schwarz K, Ligor M, et al. Noninvasive detection of lung cancer by analysis of exhaled breath. *BMC Cancer.* 2009;9:348.
  30. Amann A, Corradi M, Mazzone P, Mutti A. An update on the use of Raman spectroscopy in molecular cancer diagnostics: current challenges and further prospects. *Expert Rev MolDiagn.* 2011; 11(2):207-17.



31. Phillips M, Herrera J, Krishnan S, Zain M, Greenberg J, Cataneo RN. Detection of an extended human Volatome with comprehensive two-dimensional gas chromatography time-of-flight mass spectrometry. *J Chromatogr B Biomed Sci Appl.* 1999;729(1-2):75-88.
32. Mendis S, Sobotka PA, Euler DE. Pentane and isoprene in expired air from humans: gas-chromatographic analysis of single breath. *Clin. Clin Chem.* 1994;40(8):1485-8.
33. Smith D, Wang T, Sulé-Suso J, Spanel P, El Haj A. Measurement of acetaldehyde in exhaled breath using a laser absorption spectrometer. *Rapid Commun Mass Spectrom.* 2003;17(8):845-50.
34. Phillips M, Altorki N, Austin JH, Cameron RB, Cataneo RN, Kloss R, et al. Detection of lung cancer using weighted digital analysis of breath biomarkers. *ClinChimActa.* 2008;393(2):76-84.
35. Phillips M, Cataneo RN, Cummin AR, Gagliardi AJ, Gleeson K, Greenberg J, et al. Detection of lung cancer with volatile markers in the breath. *Chest.* 2003;123(6):2115-23.
36. Devillier P, Salvator H, Naline E, Couderc LJ, Grassin-Delyle S. Metabolomics in the diagnosis and pharmacotherapy of lung diseases. *Curr Pharm Des.* 2017;23(14):2050-9.
37. Di Natale A, Macagnano E. Martinelliet Lung cancer identification by the analysis of breath by means of an array of nonselective gas sensors al. *BiosensBioelectron.* 2003;18:1209-18.
38. Itoh T, Nakashima T, Akamatsu T, Izu N, Shin W. Nonanal gas sensing properties of platinum, palladium, and gold-loaded tin oxide VOCs sensors. *Sens Actuators B.* 2013;187:135-41.
39. Broza YY, Vishinkin R, Barash O, Nakhleh MK, Haick H. Synergy between nanomaterials and volatile organic compounds for non-invasive medical evaluation. *Chem.Soc Rev.* 2018;47(13):4781-859.
40. Hakim M, Broza YY, Barash O, Peled N, Phillips M, Amann A, et al. Volatile organic compounds of lung cancer and possible biochemical pathways. *Chem Rev.* 2012;112(11):5949-66.
41. Peled N, Hakim M, Bunn PA, Miller YE, Kennedy TC, Mattei J, et al. Non-invasive breath analysis of pulmonary nodules. *J ThoracOncol.* 2012;7(10):1528-33. DOI: 10.1097/JTO.0b013e3182637d5f, PMID 22929969.
42. Broza YY, Kremer R, Tisch U, Gevorkyan A, Shiban A, Best LA. et al. A nanomaterial-based breath test for short-term follow-up after lung tumor resection. *Nanomedicine.* 2013;9(1):15-21.
43. Barash O, Peled N, Hirsch FR, et al. Exhaled breath analysis for the early detection of lung cancer *Small.* 2009; 5:2618.
44. Shlomi D, Abud M, Liran O, Bar J, Gai-Mor N, Ilouze M, et al. Non-invasive breath analysis of pulmonary nodules. *J ThoracOncol.* 2017;12(10):1544-51.
45. Nardi-Agmon M, Abud-Hawa O Liran, et al. Ibid. Radiographically determined noninvasive adenocarcinoma of the lung. *J. Thorac. Oncol.* 2016;11:827.
46. Nakhleh MK, Amal H, Jeries R, et al. Diagnosis and classification of 17 diseases from 1404 subjects via pattern analysis of exhaled molecules *ACS Nano* 11. 2017;112.
47. Nakhleh MK, Haick H, Humbert M, Cohen-Kaminsky S. Volatolomics of breath as an emerging frontier in pulmonary arterial hypertension. *Eur. Respir J.* 2017;4 9(2):1601897
48. Lai YC, Potoka KC, Champion HC, Mora AL, Gladwin MT. Pulmonary arterial hypertension: the clinical syndrome. *Circ Res.* 2014;115(1):115-30.
49. Galiè N, Humbert M, Vachiery JL, Gibbs S, Lang I, Torbicki A, et al. Guidelines for the diagnosis and treatment of pulmonary hypertension. *Eur Heart J.* 2016;37(1):67-119
50. F. SJr, Tonelli AR, Barnes J, et al. Chronic hypersensitivity pneumonitis in the southeastern United States: an assessment of how clinicians reached the diagnosis. *Breath analysis in pulmonary arterial hypertension. Chest.* 2014; 145(3):551-8.
51. Cohen-Kaminsky S, Nakhleh M, Perros F, Montani D, Girerd B, Garcia G, et al. Role of biomarkers in evaluation, treatment and clinical studies of pulmonary arterial hypertension. *Am J RespirCrit Care Med.* 2013;188(6):756-9.
52. Mazzone PJ, Hammel J, Dweik R, Na J, Czich C, Laskowski D, et al. Diagnosis of lung cancer by the analysis of exhaled breath with a colorimetric sensor array. *Thorax.* 2007;62(7):565-8.

53. Zetola NM, Modongo C, Matsiri O, Tamuhla T, Mbongwe B, Matlhagela K, et al. Diagnosis of pulmonary tuberculosis and assessment of treatment response through analyses of volatile compound patterns in exhaled breath samples. *J Infect.* 2017;74(4):367-76.
54. Bruins M, Rahim Z, Bos A, et al. Diagnosis of active tuberculosis by e-nose analysis of exhaled air. *J Infectol.* 2017;74: 367.
55. Nakhleh MK, Jeries R, Gharra A, Binder A, Broza YY, Pascoe M, et al. Detecting lung infections in breathprints: empty promise or next generation diagnosis of infections. *EurRespir J.* 2014;43(5):1522-5.
56. Phillips M, Cataneo RN, Condos R, Ring Erickson GA, Greenberg J, La Bombardi V, et al. Volatile biomarkers of pulmonary tuberculosis in the breath. *Tuberculosis (Edinb).* 2007;87(1):44-52.
57. Greulich T, Hattesoehl A, Grabisch A, et al. I rituximab in the treatment of refractory pulmonary sarcoidosis *ibid.* 2013;42:145.
58. Dragonieri S, Porcelli F, Longobardi F, Carratù P, Aliani M, Ventura VA, et al. An electronic nose in the discrimination of obese patients with and without obstructive sleep apnoea. *J Breath Res.* 2015; 9(2):026005.
59. AntonelliIncalzi R, Pennazza G, Scarlata S, et al. Breathprinting and early diagnosis of lung cancer breath. 2015;19:623.
60. Smith D, Sovová K, Dryahina K, Doušová T, Dřevínek P, Španěl P. Breath concentration of acetic acid vapour is elevated in patients with cystic fibrosis. *J Breath Res.* 2016;10(2):021002.
61. van de Kant KD, van der Sande LJ, Jöbsis Q, van Schayck OC, Dompeling E. Clinical use of exhaled volatile organic compounds in pulmonary diseases: A systematic review. *Respir Res.* 2012;13:117.
62. McGrath LT, Patrick R, Mallon P, Dowe L, Silke B, Norwood W, et al. Breath isoprene during acute respiratory exacerbation in cystic fibrosis. *EurRespir J.* 2000; 16(6):1065-9.
63. Miekisch JK, Schubert GF. Noeldge-Schomburg Diagnostic potential of breath analysis—focus on volatile organic compounds *ClinChim. Acta.* 2004;347:25-39.
64. Zhang M, Sun JJ, Khatib M, Lin ZY, Chen ZH, Saliba W, et al. Time-space-resolved origami hierarchical electronics for ultrasensitive detection of physical and chemical stimuli. *Nat Commun.* 2019;10(1):1120.
65. Wilson AD, Baietto M. Applications and advances in electronic-nose technologies. *Sensors (Basel).* 2009;9(7):5099-148.
66. Dragonieri S, Pennazza G, Carratu P, et al. Identifying volatile metabolite signatures for the diagnosis of bacterial respiratory tract infection using electronic nose technology: A pilot study *Lung.* 2017;195(157).
67. Kharitonov SA, Barnes PJ. Exhaled markers of pulmonary disease. *Am J RespirCrit Care Med.* 2001;163(7):1693-722.
68. Chuchalin AG, Voznesenskiy N, Dulin K, et al. Exhaled nitric oxide and exhaled carbon monoxide in pulmonary diseases. *Am J RespirCrit Care Med.* 1999;159:A410.
69. Alving K, Zetterquist W, Wennerholm P, Lundberg J. Low levels of exhaled carbon monoxide in asthmatics using infrared technique *Ibid.* Vol. A841.
70. Zayasu K, Sekizawa K, Okinaga S, Yamaya M, Ohrui T, Sasaki H. Increased carbon monoxide in exhaled air of asthmatic patients *Ibid.* *Am J RespirCrit Care Med.* 1997;156(4 Pt 1):1140-3.
71. Horváth I, Donnelly LE, Kiss A, Paredi P, Kharitonov SA, Barnes PJ. Combined use of exhaled hydrogen peroxide and nitric oxide in monitoring asthma. *Thorax.* 1998;53(8):668-72.
72. Horvath I, Loukides S, Wodehouse T, et al. Comparison of exhaled and nasal nitric oxide and exhaled carbon monoxide levels in bronchiectatic patients with and without primary ciliary dyskinesia *Ibid.* Vol. 870.
73. Paredi P, Kharitonov SA, Leak D, Shah PL, Cramer D, Hodson ME, et al. Exhaled carbon monoxide levels elevated in diabetes and correlated with glucose concentration in blood: a new test for monitoring the disease? *Am J RespirCrit Care Med.* 2000;161(4 Pt 1):1247-51.
74. Antuni JD, Du Bois AB, Ward S, et al. Outcome, functional autonomy, and quality of life of elderly patients with a long-term intensive care unit stay *Ibid.* 1999;159:A510.
75. Monma M, Yamaya M, Sekizawa K, Ikeda K, Suzuki N, Kikuchi T, et al. Increased carbon monoxide in exhaled air of patients with seasonal allergic rhinitis. *ClinExp Allergy.* 1999;29(11):1537-41.
76. Pitkänen OM, Hallman M, Andersson SM. Correlation of oxygen radical-induced lipid

- peroxidation with outcome in very low birth weight infants. *J Pediatr.* 1990;116(5):760-4.
77. Ip MS, Lam B, Chan LY, Zheng L, Tsang K, Fung P, et al. Obstructive sleep apnea syndrome. *Am J Respir Crit Care Med.* 2000;162(6):2166-71.
  78. Phillips M, Gleeson K, Hughes JM, Greenberg J, Cataneo RN, Baker L, et al. Volatile organic compounds in breath as markers of lung cancer *Lancet.* *Lancet.* 1999;353(9168):1930-3.
  79. Horváth I, Donnelly LE, Kiss A, Kharitonov SA, Lim S, Chung KF, et al. Combined use of exhaled hydrogen peroxide and nitric oxide in monitoring asthma. *Am J Respir Crit Care Med.* 1998;158(4):1042-6.
  80. Jöbsis Q, Raatgeep HC, Schellekens SL, Hop WC, Hermans PW, de Jongste JC. Off-line sampling of exhaled air for nitric oxide measurement in children: methodological aspects. *Eur Respir J.* 1998;12(2):483-5.
  81. Dekhuijzen PN, Aben KK, Dekker I, Aarts LP, Wielders PL, van Herwaarden CL, et al. Increased exhalation of hydrogen peroxide in patients with stable and unstable chronic obstructive pulmonary disease. *Am J Respir Crit Care Med.* 1996;154(3 Pt 1):813-6.
  82. Hull J, Vervaart P, Grimwood K, Phelan P. Pulmonary oxidative stress response in young children with cystic fibrosis. *Thorax.* 1997;52(6):557-60.
  83. Collins CE, Quaggiotto P, Wood L, O'Loughlin EV, Henry RL, Garg ML. Elevated plasma levels of F2alpha isoprostane in cystic fibrosis. *Lipids.* 1999;34(6):551-6.
  84. Li B, Dong Q, Downen RS. Electrospinning of nanofibers *Chemical.* 2019;287:584.
  85. Sravya HS, NavyaKeerthan YS, Low Cost BMN. Exhale breath analyzer for asthma Detection *International. J Mod Trends Eng Res.* 2016;03:6.
  86. Dragonieri S, Annema JT, Schot R, van der Schee MP, Spanevello A, Carratù P et al. An electronic nose in the discrimination of patients with non-small cell lung cancer and COPD. *Lung Cancer.* 2009;64(2):166-70.
  87. Itoh T, Miwa T, Tsuruta A. Development of an exhaled breath monitoring system with semiconductive gas sensors, a gas condenser unit, and gas chromatograph columns *Sensors.* 2016;16:1891.
  88. Tarik S, Omar Z, M. Moufid Exhaled breath analysis using electronic nose and gas chromatography-mass spectrometry for non-invasive diagnosis of chronic kidney disease, diabetes mellitus and healthy subjects. *Sens Actuators B.* 2018;257:178.
  89. Aleksanyan M, Aroutiounian V, G. Shahnazaryan patent of Armenia No. AM20210018 24.02,2021.
  90. P. Brinkman, A. Hilse M. van der Zee, and A.H. Wagener Breathomics and treatable traits for chronic airway diseases. *Curr Opin.* 2019;25:1.
  91. Neerinx AH, Vijverberg SJH, Lieuwe DJ et al. Breathomics from exhaled volatile organic compounds in pediatric asthma *Pulmonology 1* (2017).
  92. Wheelock CE, Goss VM, Balgoma D, Nicholas B, Brandsma J, Skipp PJ, et al. Application of 'omics technologies to biomarker discovery in inflammatory lung diseases. *Eur Respir J.* 2013;42(3):802-25.
  93. van de Kant KD, van Berkel JJ, Jöbsis Q, Lima Passos V, Klaassen EM, van der Sande L, et al. Exhaled breath profiling in diagnosing wheezy preschool children. *Eur Respir J.* 2013;41(1):183-8.
  94. Buszewski B, Keszy M, Ligor T, Amann A. A. Amann Human exhaled air analytics: biomarkers of diseases. *Biomed Chromatogr.* 2007;21(6):553-66.
  95. Španěl P, Španěl DP, Smith D. Progress in SIFT-MS: breath analysis and other applications. *Mass Spectrom Rev.* 2011;30(2):236-67.
  96. Buryakov IA, Krylov EV, Nazarov EG, Rasulev UK. A new method of separation of multi-atomic ions by mobility at atmospheric pressure using a high-frequency amplitude-asymmetric strong electric field. *Int J Mass Spectrom Ion Processes.* 1993;128(3):143-8.
  97. Zrodnikov Y, Davis CE. The Highs and Lows of FAIMS: Predictions and Future Trends for High Field Asymmetric Waveform Ion Mobility Spectrometry. *J Nanomed Nanotechnol.* 2012;3(5):109e.
  98. Van der Schee MP, Paff T, Brinkman P, van Aalderen WMC, Haarman EG, Sterk PJ. Breathomics in Lung Disease. *Chest.* 2015;147(1):224-31. doi: 10.1378/chest.14-0781.
  99. Gahleitner F, Guallar-Hoyas C, Beardsmore CS, Pandya HC, Thomas CP. Metabolomics pilot study to identify volatile organic compound markers of childhood

- asthma in exhaled breath. *Bioanalysis*. 2013;5(18):2239-47.
100. Buck L, Axel R. A novel multigene family may encode odorant receptors: A molecular basis for odor recognition. *Cell*. 1991;65(1):175-87.
101. Wojtas J, Bielecki Z, Stacewicz T, Mikołajczyk J, Nowakowski M Stacewicz, et al. Ultrasensitive laser spectroscopy for breath analysis. *Opto Electron Rev*. 2012;20(1):26.
102. McCurdy MR, Bakhirkin Y, Wysocki G, Lewicki R, Tittel FK. Quantum cascade laser-based integrated cavity output spectroscopy of exhaled nitric oxide. *J Breath Res*. 2007;1(1):014001.
103. Available:[http://www.hopkinsmedicine.org/healthlibrary/test\\_procedures/pulmonary/oximetry\\_92,p07754](http://www.hopkinsmedicine.org/healthlibrary/test_procedures/pulmonary/oximetry_92,p07754).

---

© 2022 Aroutiounian; This is an Open Access article distributed under the terms of the Creative Commons Attribution License (<http://creativecommons.org/licenses/by/4.0>), which permits unrestricted use, distribution, and reproduction in any medium, provided the original work is properly cited.

*Peer-review history:*

*The peer review history for this paper can be accessed here:*  
<https://www.sdiarticle5.com/review-history/86696>